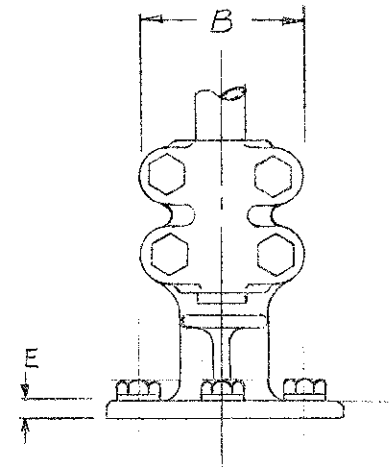
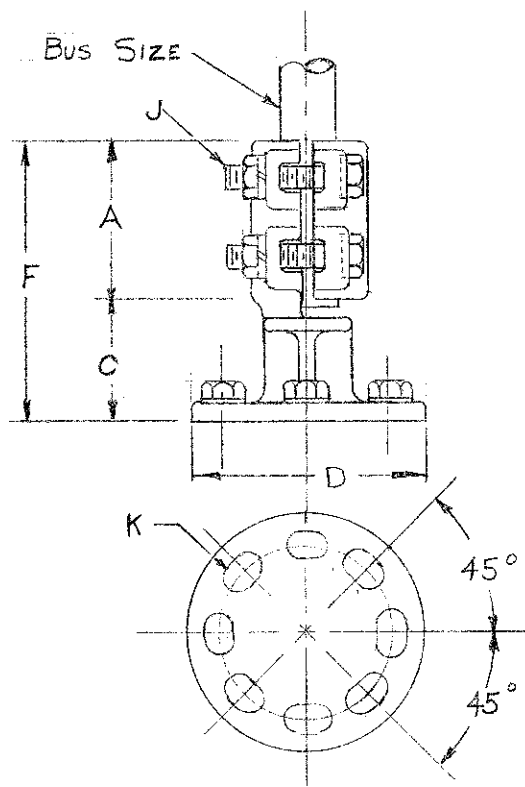


REVISIONS		DATE	NO.	DESCRIPTION	BY
		10-19-79	3	REVISED DIMS FOR CHANGE ADY	



REGULARLY SUPPLIED WITH CAP SCREWS AND LOCKWASHERS FOR MOUNTING TO CAP OR INSULATOR. WHEN MOUNTING TO BASE OF INSULATOR IS REQUIRED, ADD "B" TO CATALOG NUMBER TO ASSURE OBTAINING BOLTS, NUTS, AND LOCKWASHERS. EXAMPLE: UDE-04-3-B

MAT'L - CASTING - #255 ALLOY
ELECTRICAL BRONZE
CLAMPING HDW. - SILICON BRONZE
MOUNTING HDW. - GALV. STEEL

UDE

REVISIONS		DATE	NO.	DESCRIPTION	BY
		12-17-70	5	REDRAWN	RJ
		9-6-73	6	ADDED UDE-40-3	RH
		1-10-77	7	A WAS 3-B WAS 2 1/4 - C WAS 2 - CP	CP

CATALOG NUMBER	BUS SIZE I.P.S.	DIMENSIONS IN INCHES							
		A	B	C	D	E	F	J	K
UDE-04-3	1/2"	2 1/2	2 3/16	1 7/8	4 1/4	3/8	4 3/8	3/8	9/16 x 3/4
UDE-06-3	3/4	3 3/8	2 1/2	1 7/8	4 1/4	3/8	5	3/8	9/16 x 3/4
UDE-10-3	1	3 3/8	2 7/8	1 7/8	4 1/4	3/8	5	3/8	9/16 x 3/4
UDE-12-3	1 1/4	2 7/8	3 9/16	1 7/8	4 1/4	3/8	4 3/4	1/2	9/16 x 3/4
UDE-14-3	1 1/2	3 3/8	3 1/16	2 1/8	4 1/4	3/8	5 1/4	1/2	9/16 x 3/4
UDE-20-3	2	3 5/8	4 5/16	2 1/4	4 1/4	3/8	5 7/8	1/2	9/16 x 3/4
UDE-24-3	2 1/2	3 3/8	4 3/4	2 1/2	4 1/4	3/8	5 7/8	1/2	9/16 x 3/4
UDE-04-5	1/2	2 1/2	2 3/16	1 7/8	6 1/4	3/8	4 3/8	3/8	11/16 x 7/8
UDE-06-5	3/4	3 3/8	2 1/2	1 7/8	6 1/4	3/8	5	3/8	11/16 x 7/8
UDE-10-5	1	3 3/8	2 7/8	1 7/8	6 1/4	3/8	5	3/8	11/16 x 7/8
UDE-12-5	1 1/4	2 7/8	3 9/16	1 7/8	6 1/4	3/8	4 3/4	1/2	11/16 x 7/8
UDE-14-5	1 1/2	3 3/8	3 1/16	2 1/8	6 1/4	3/8	5 1/4	1/2	11/16 x 7/8
UDE-20-5	2	3 5/8	4 5/16	2 1/4	6 1/4	3/8	5 7/8	1/2	11/16 x 7/8
UDE-24-5	2 1/2	3 3/8	4 3/4	2 1/2	6 1/4	3/8	5 7/8	1/2	11/16 x 7/8
UDE-30-5	3	4 1/4	5 13/16	2 3/8	6 3/4	3/8	6 5/8	3/8	11/16 x 7/8

R136 X8

DATE 1-20-55
DWN BY RLW CKD BY WJS
APPROVED
SCALE Do NOT

OUTDOOR BUS SUPPORTS & FITTINGS
INSULATOR TO TUBE
TYPE - UDE

ANDERSON ELECTRIC CORP.
LEEDS ALABAMA
CAT. NO. DWG. NO. C-4106 SH 1 OF 2